

# WE ARE

location — Events — Studios — Location  
— Product Showcase — Corporate — Meetings —  
— Ecofriendly — Team Building — & More



# —INDUSTRIAL AKROLL—

Old  
Factory  
of New  
Creation



**Industrial Akroll offers a new space for creation, where artists, creatives, brands and talents can connect and engage with their audience. A high-quality environment with flawless attention to detail and great versatility that fits perfectly the standards of producers, photographers, filmmakers, the events industry, and much more.**



—INDUSTRIAL  
AKROLL—

Old  
Factory  
of New  
Creation

This factory from the 70's originally manufactured small metallic accessories for the fashion industry and was unused for over 20 years until 2019 when it was rescued and transformed honoring its history and the building's time scars so its industrial heritage remains mostly intact.

# WHY HERE?

## Inspiring.

The place is a 2,000 sqm canvas for creation, with plenty of natural light and inspiring spaces.

## Beautiful Industrial atmosphere with the newest facilities.

The building is full of spaces and original backgrounds of different styles. Get the benefit from the technical advantages of a professional space with the charming industrial atmosphere .

## Nice and comfortable.

A high quality environment with flawless attention to detail and great versatility. Calm, inspiring and full of magical good vibes. It just feels nice working here.

## Better accessibility.

We favor accessibility with a large loading dock, and a elevator with a 3m high cabin.

## A new concept of space designed for:

- Photo and video shootings.
- As a location for films and advertisements.
- Corporate events, Product showcases, Team Building, etc.
- Visual arts.
- Workshops and much more...

## Full equipped.

Reception, Cloakroom, Infinity coves, private terraces, a rooftop, a garden, dressing rooms with shower and washbasin, break-out rooms, vip loft lounge for client and production crew, blackout curtains, skylights, 9 hanging points of 600 kgs each to suspend lighting and scenography (optional truss setup available), loading dock, parking spaces and much more.

## 15' from the airport and Barcelona center, and 5 min from the Fira.

Industrial Akroll is very well connected, just 15 mins away from the main means of transport to entry and exit the city of Barcelona.

## Outdoors everywhere.

Outdoors in every floor, private terraces and a rooftop. All of them full of plants. This is how we sense the modern working space, less exposed to the city and more connected to Nature.

## Constant customer service.

Constant customer service during your production. We are right there for anything you'll need.

## Constant air renewal system.

Industrial Akroll has plenty of wide spaces, AC and a new air renewal system to ensure a healthy environment that fits perfectly with the new working security requirements.

## New, modern, healthy and safe.

New installations of AC, electricity, alarm, data, fire protection, etc., that strictly complies with the current regulations and provides tranquility and comfort to your event.

## Professional electrical panels.

for each production with the option of an external direct line pre-installed in each main space (for large consumptions).



# SUSTAINABILITY

**We are an ecofriendly venue and we're working everyday to be as much zero-waste and carbon neutral as possible.**



• **The whole refurbishing project of the old factory is based on the model of recycling buildings for ecology instead of building new ones.**

• **We are a non plastic preference venue and recyclable packagings.**

• **Preference on working with proximity and ecofriendly suppliers.**

- **Our power comes 100% from renewable sources.**

We are part of an independent cooperative committed to promoting a 100% renewable model. The cooperative is at the service of its members in an efficient, transparent and responsible manner and it's financed with voluntary economic contributions from members.

**We also generate our own power with our rooftop solar panels which mostly make us an energy self-sufficiency venue.**





Studio 3 (Open Room)



Studio 1



The Rooftop



Studio 2

**2,000 sqm. with plenty of natural light & inspiring spaces.**

A newly refurbished factory at the heart of L'Hospitalet, the rising cultural neighbourhood of Barcelona, offering a new inspiring multi-purpose space and a meeting point for the mice industry.



Central Patio



Studio 2



Exhibition Teresa Solar



Central Patio



Reception

# OUR SERVICES

## Studios, Location and Venue Rental.

2000 sqm of fully equipped daylight Studios, open areas, outdoors and many extra inspiring spaces. A full building multi-purpose location.



## Set Construction.

We can build your ideas.

## Graphic Design Service.

We can take care of producing and setting up all the visual identity you need for your event.

## Catering.

Nice selection of exclusivity catering suppliers with availability of dining areas with outdoors and independent of the work areas.

## AAVV and Lightning Rental.

Highly professional and experienced exclusivity providers ready for all kind of events.

## Furniture and Decor.

We have collected beautiful designer pieces and rescued some of the original factory furniture and objects for use or as a decoration as well as all the functional furniture you need for your event.

\*All furniture is for rent.

## Cloakroom, Security and Hostess Staff

All the help you need to welcome your guests.

## Parcel Custody.

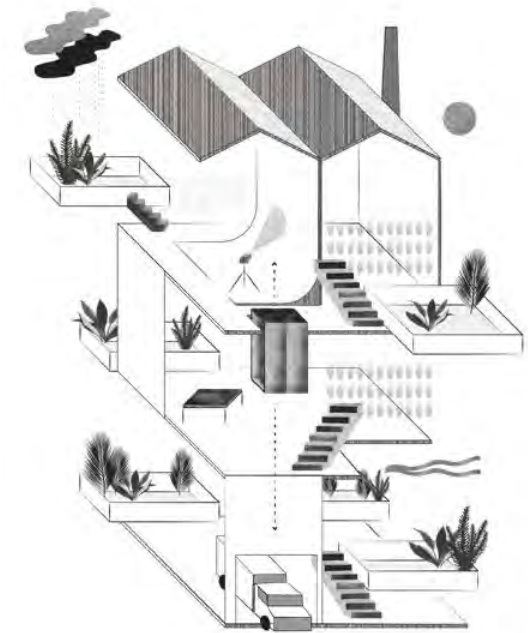
Reception, storage and disinfection of parcels.

## Parking Spaces



# HOW TO BOOK:

Depending on your needs and the size of the event, you can rent the space by floors or the entire building.



What size is your event?	Choose your floor:	What's included	Hours incl.
<p><b>S</b> SMALL EVENT Up to 160 pax.</p>	<p>Top Floor First Floor Ground Floor</p>	<p>A hall floor in exclusive for your event</p> <p>Non exclusive use of, reception, loading dock and parking areas (limited capacity)</p>	<p>12 h. 8 h. to 20 h.</p>
<p><b>L</b> BIG EVENT Up to 270 pax.</p>	<p>Full Building (Capacity in Top Floors 160px)</p>	<p>All the building areas use included</p> <p>Exclusive use of loading dock and parking areas (limited capacity)</p>	

Small event?

# CHOOSE YOUR FLOOR:

Top Floor

First Floor

Ground Floor



**S**

SMALL  
EVENT  
Up to 160  
pax.



# TOP FLOOR:

Studio 1  
Studio 2  
The Rooftop

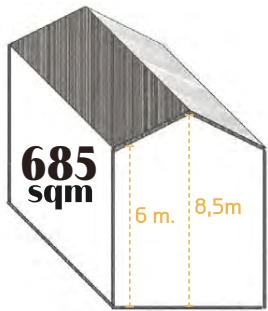


**S**  
SMALL  
EVENT  
Up to 160  
pax.

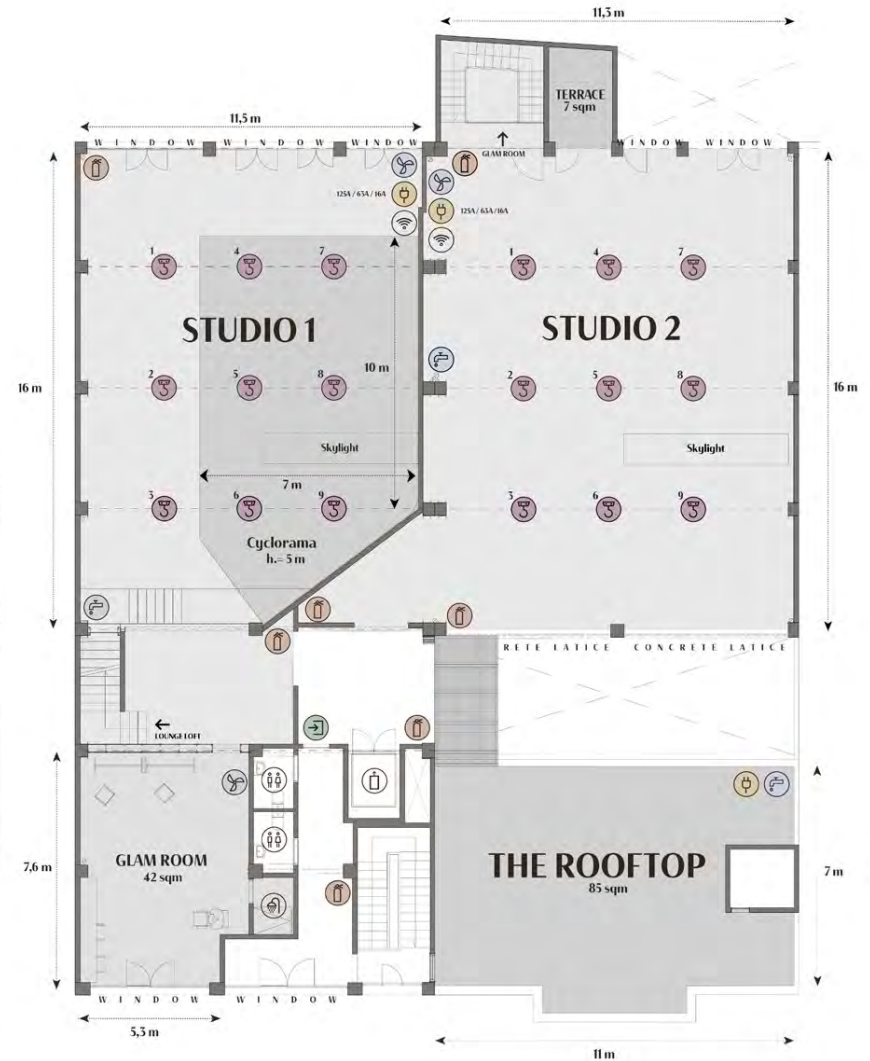
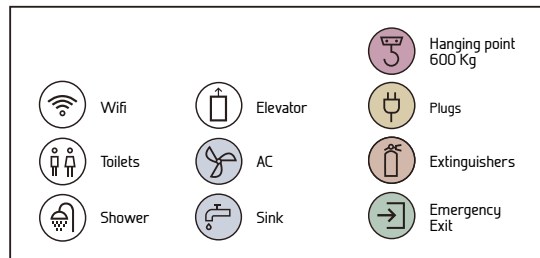
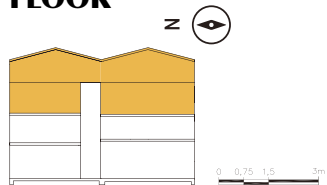


# Top Floor

Studio 1 + Studio 2 + Lounge Loft + Glam Room 1 + The Rooftop



## TOP FLOOR



# Studio 1

(Top Floor)



Confort and  
design for  
your  
premium  
events.

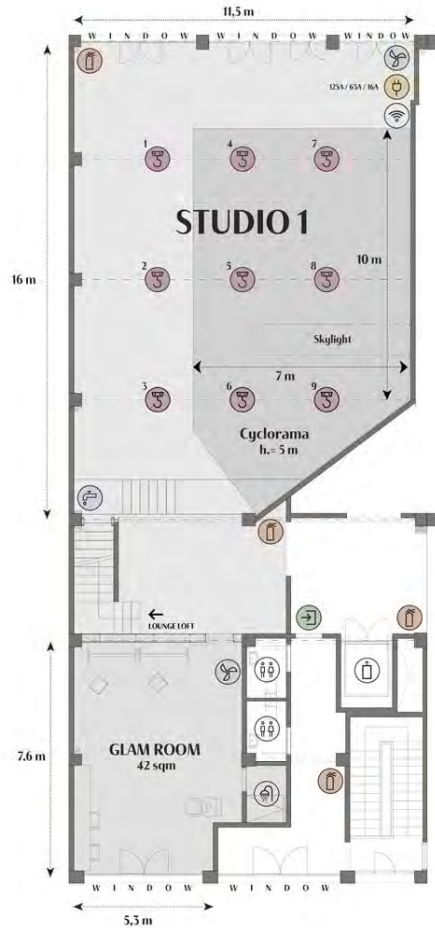


Private Lounge Loft

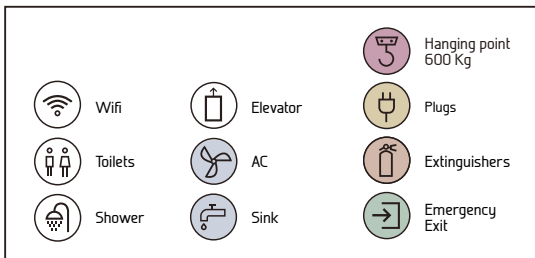
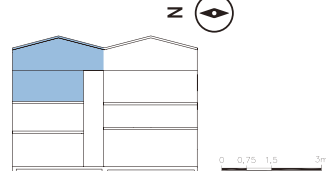


# Studio 1

## (Top Floor)

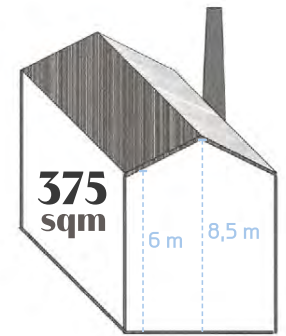


### TOP FLOOR



### description:

Big diaphanous and high-rise space with natural light, infinity cove, large private terrace, dressing room with private shower and washbasin, loft lounge for client and production crew, blackout curtains for windows and skylight, water area, 9 hanging points of 600 kgs each to suspend EQ and props (optional truss setup available)

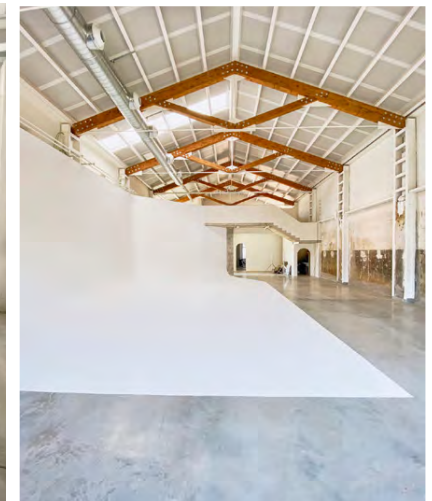


### measurements:

Infinity cove: 10 m x 7 m x 5 m (h)	Glam Room: 42 sqm	Terrace: 45 sqm	Lounge Loft: 90 sqm
--	----------------------	--------------------	------------------------

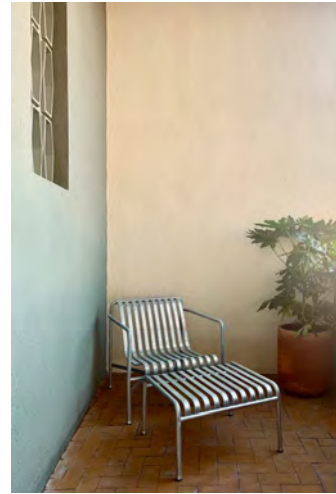
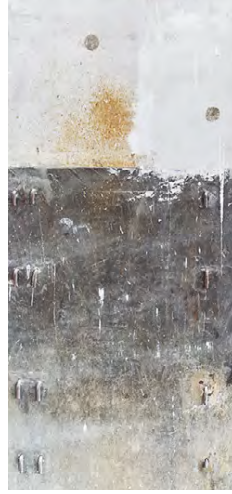
### features:

- Infinity Cove
- Daylight
- Total Blackout
- Glam Room
- Lounge loft
- Private Terrace
- Private Shower
- Washbasin
- Truss (optional)

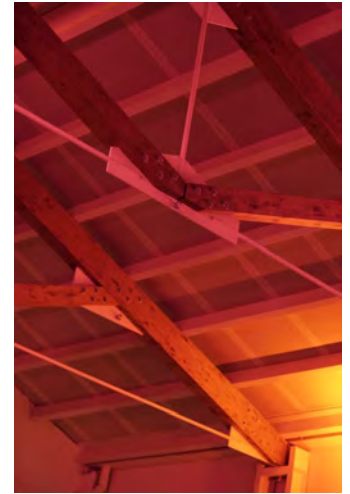


# Studio 2

(Top Floor)



When light becomes magic.

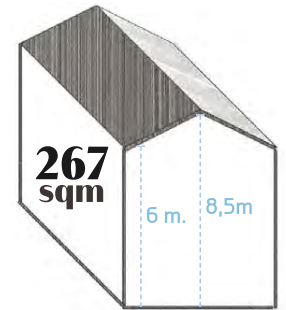


# Studio 2

(Top Floor)

description:

Big and diaphanous high-rise space with natural light, windows to the east and beautiful concrete lattice to the west, skylight, private terrace, dressing room, 9 hanging points of 600 kgs each to suspend lights or props (optional truss setup available), 360° double rails to hang curtains.



measurements:

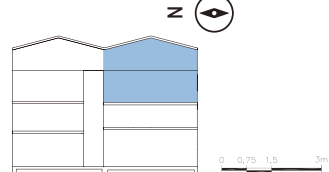
Studio:	Glam Room:	Terrace:
267 sqm	46 sqm	7 sqm

features:

- Daylight
- Total Blackout
- Glam Room
- 360° Double Rails for Curtains
- Private Terrace
- Truss (optional)



**TOP FLOOR**





# The Rooftop

## (Top Floor)

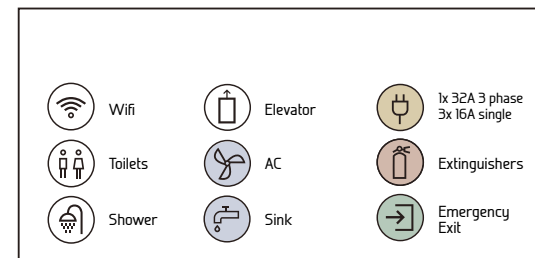


85  
sqm

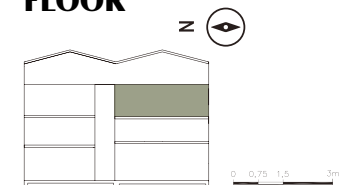
### description:

A sunny terrace that connects to Studio 1 and Studio 2 by a suspended walkway over the Central Patio. The Rooftop structure has been reinforced to increase its load capacity and its possible uses.

## The outdoor space.



### TOP FLOOR



# FIRST FLOOR:

## Studio 3 The House

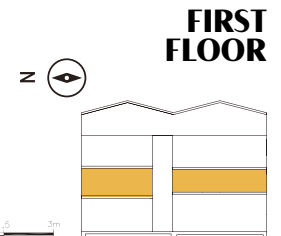
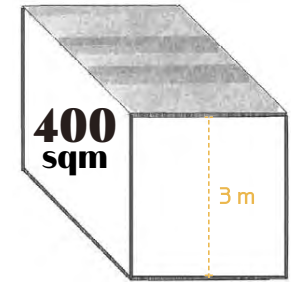


**S**  
SMALL  
EVENT  
Up to 160  
pax.



# First Floor

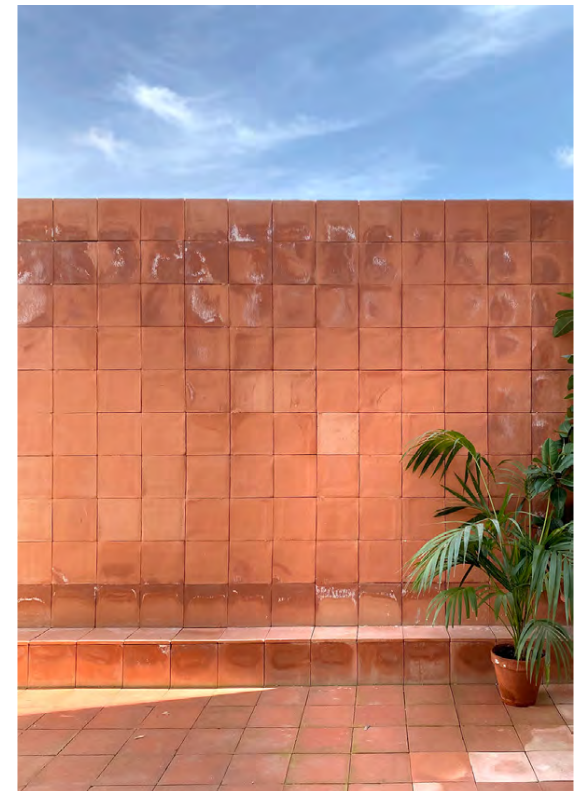
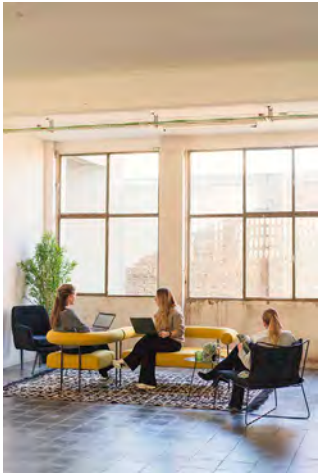
## Studio 3 + Glam Room 2 + Meeting Room



	Wifi		Elevator		Plugs
	Toilets		AC		Extinguishers
	Shower		Sink		Emergency Exit

# Studio 3

(First Floor)



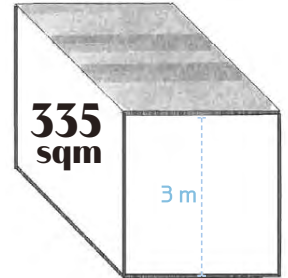
# Studio 3

## (First Floor)



**description:** The first floor of the factory is a large loft-style space with beautiful natural light, big windows to the east and the industrial concrete latticework to the west. This space maintains the original cement tile floor and has a private terrace (The Red Terrace).

\*All furniture is for rent. Ask for our furniture catalogue.



**measurements:**

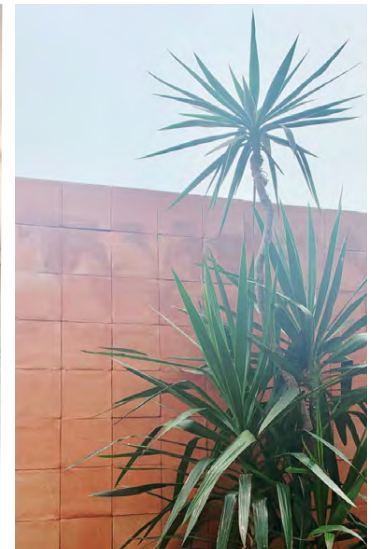
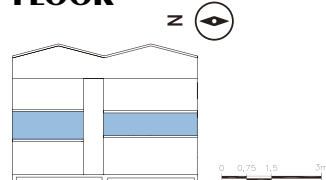
Loft:	Terrace:
319 sqm	16 sqm

**features:**

- Daylight
- Private Terrace
- Meeting Room

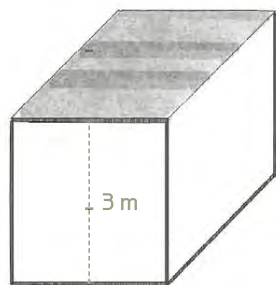
	Wifi		Elevator		Plugs
	Toilets		AC		Extinguishers
	Shower		Sink		Emergency Exit

**FIRST FLOOR**



# The House

(First Floor)

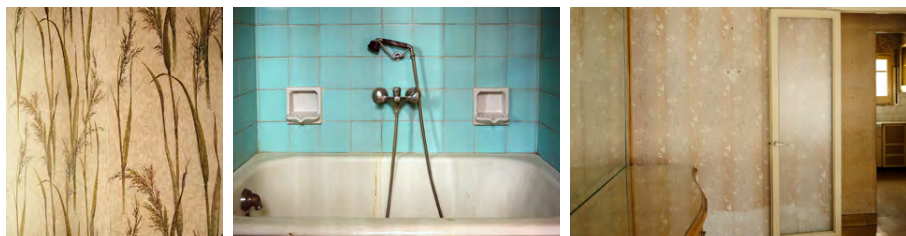
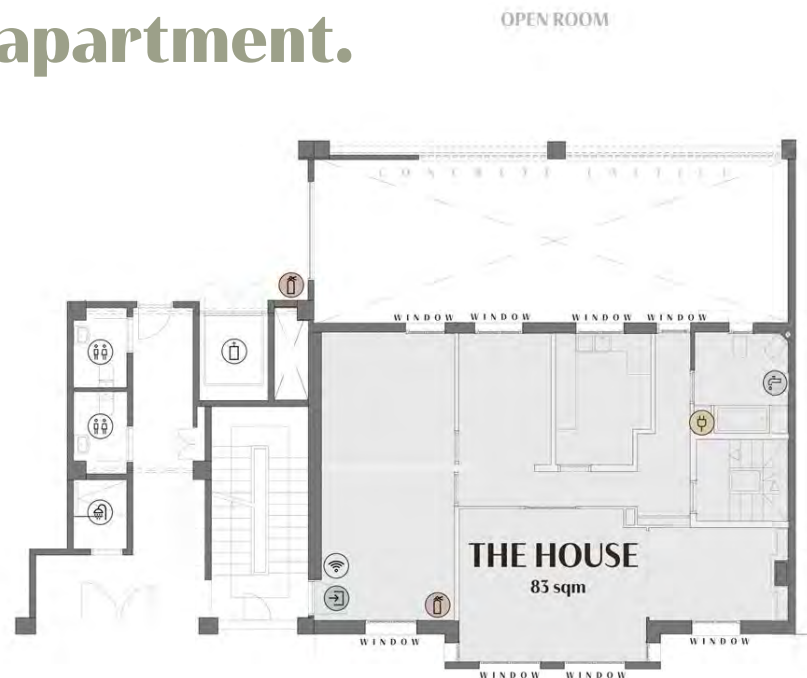


**83  
sqm**

description:

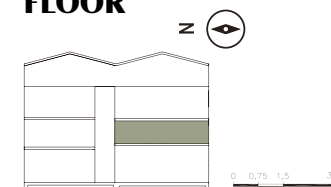
The factory also includes the old adjacent foreman's flat that has kept its 60s decor look with its beautiful original wallpapers, an authentic retro look kitchen and a blue tile bathroom with bathtub.

## The 60s apartment.



	Wifi		1x 32A 3 phase
	Toilets		Elevator
	Shower		Sink
			Extinguishers
			Emergency Exit

**TOP  
FLOOR**





S

SMALL  
EVENT  
Up to 160  
pax.

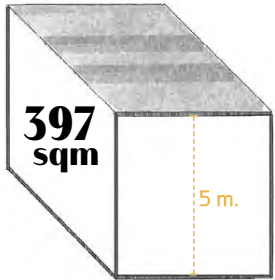
# GROUND FLOOR:

Studio 4  
Canteen  
Central Patio

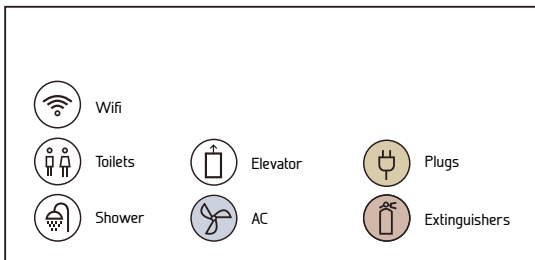
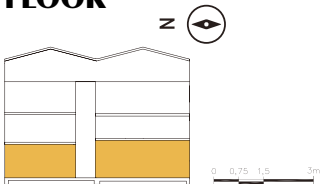


# Ground Floor

Studio 4 + Canteen + Central Patio



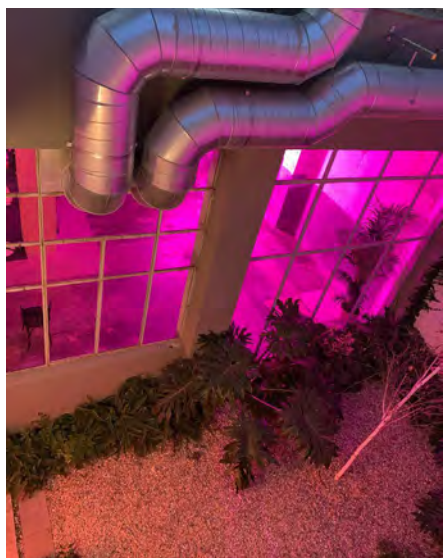
## GROUND FLOOR





# Studio 4

(Ground Floor)

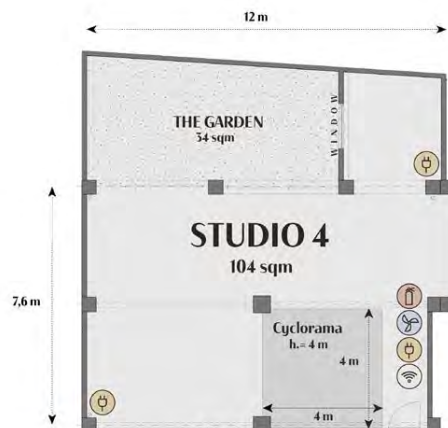
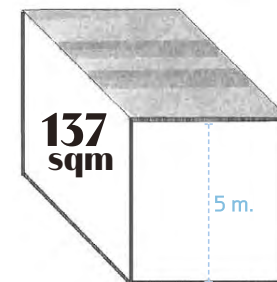


The cozy gallery,  
workshop and  
garden.



# Studio 4

## (Ground Floor)



description: Natural light drive-in space with an original factory workshop look and a private indoors fern garden.

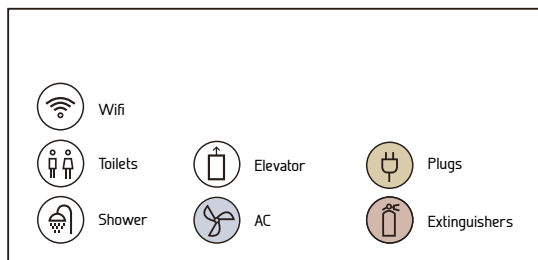
measurements:

Studio: 104 sqm	The Garden: 34 sqm	Infinity ove: 4 m x 4,34 m x 4,40 m (h)
--------------------	-----------------------	--

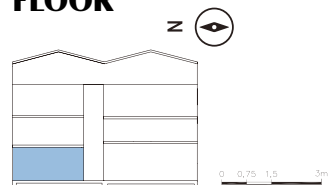
- features:
- Daylight
  - Private Garden
  - Infinity ove

LOADING DOCK

CENTRAL PATIO

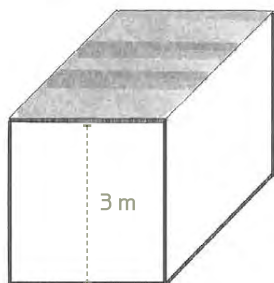


**GROUND FLOOR**



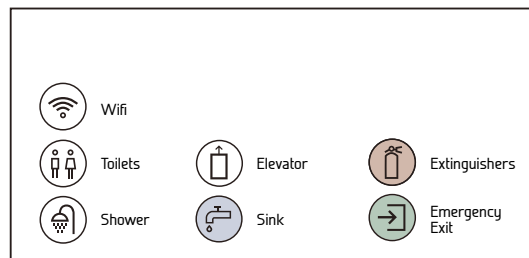
# Canteen

(Ground Floor)

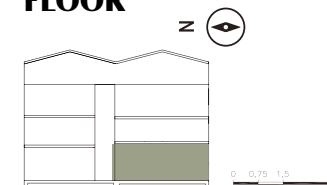


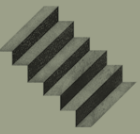
description:

An industrial look space with high ceilings and views to the tropical patio.



**GROUND FLOOR**

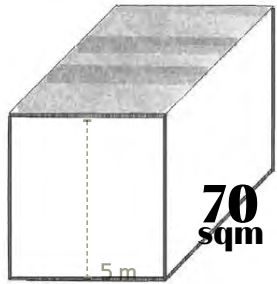




# THE WELCOME.



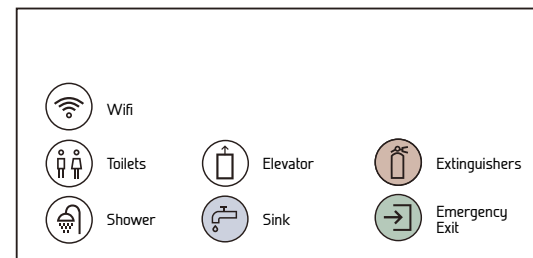
# Reception



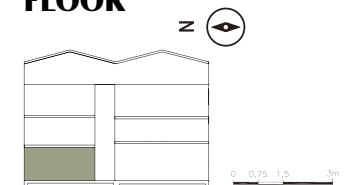
## description:

The main entrance of the factory is full of history. From the outside a black painted old brick façade and once inside a variety of textures, rests of the original 60's wallpaper and other bits and pieces tell the story of the place. Full of natural light and connected with the central patio. It has a reception desk and a Cloakroom.

## The main entrance of the factory.



## GROUND FLOOR



# Central Patio

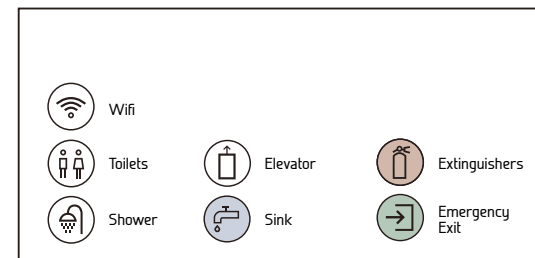
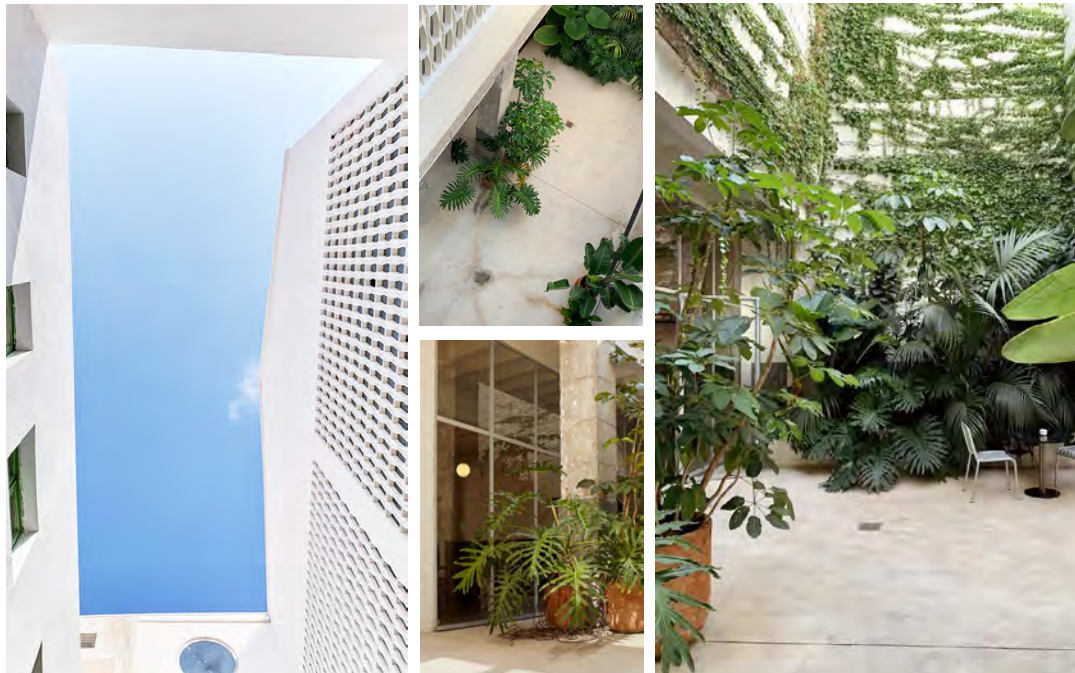


85  
sqm

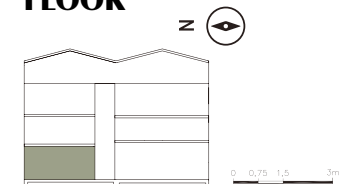
## description:

The lung of the factory is filled with tropical plants and has a beautiful soft light. It has a continuous concrete floor and white walls with many different textures.

## The central light axis of the factory with a tropical look.

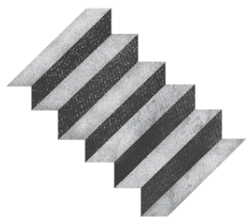


## GROUND FLOOR



# Main Stairway

## The original main stairway of the factory.



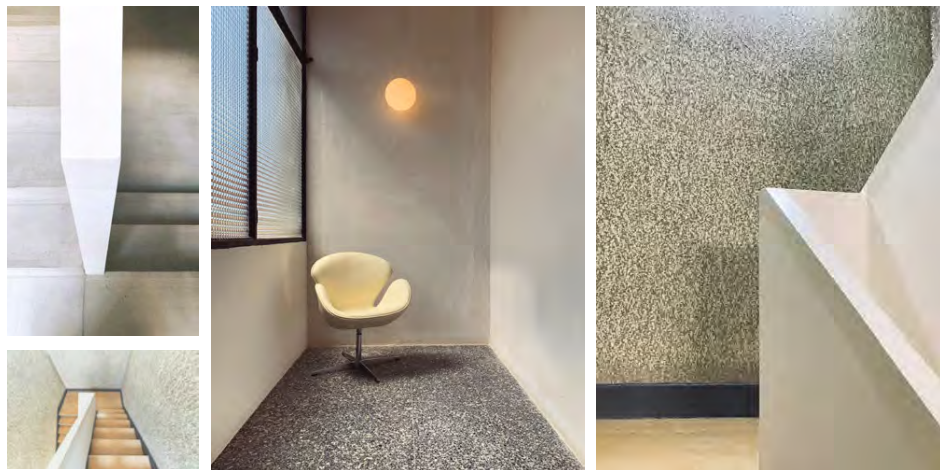
### description:

The main stairway of the factory has an architectural retro look with elegant iconic natural light corners and the original wall textures.

STUDIO 1



MAIN STAIRWAY



Wifi



Toilets



Shower

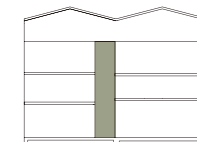


Elevator



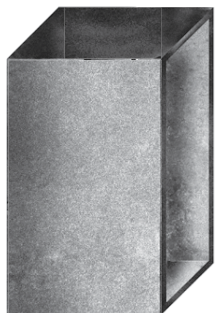
Extinguishers

### TOP FLOOR



0 0.75 1.5 3m

# Elevator

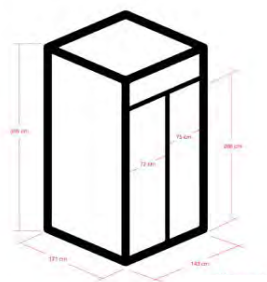


3 m

## description:

A renewed industrial look elevator with a galvanized interior finish and an extra high ceiling of 3 m tall.

## A renewed industrial look elevator.



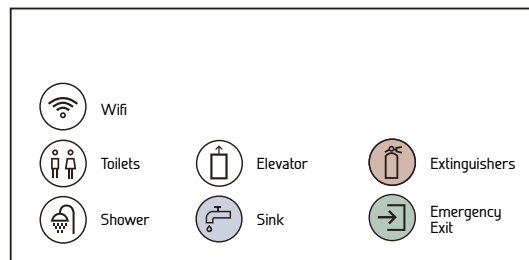
STUDIO 1

ELEVATOR

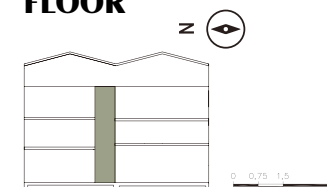
STUDIO 2



THE ROOFTOP



GROUND FLOOR







LARGE  
EVENTS  
Up to 270  
pax.

**FULL BUILDING.** Big events? Need more space and more possibilities? The entire building in exclusive for you.



— Studio 1 + Lounge Loft + Terrace —  
— Studio 2 + Terrace —  
— The Rooftop —

TOP  
FLOOR

Studio 3 + Red Terrace  
Meeting Room  
The House

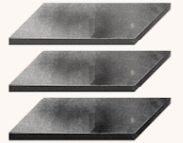
FIRST  
FLOOR

— Studio 4 + The Garden —  
— Reception —  
— Canteen + The Artist Patio —  
— Loading Dock —  
— Central Patio —

GROUND  
FLOOR



**An entire  
building to  
cover your  
needs.**



Industrial Akroll is divided into 3 floors. It has diaphanous spaces, break-out rooms, private terraces, a rooftop with views of the neighbourhood, a canteen and plenty of multi-purpose spaces. The factory also includes the old adjacent foreman's flat that has its original characteristics of the 60s decor.

Supporting  
Creative  
Excellence



**WIDE SPACES, BEAUTIFUL  
NATURAL LIGHT AND  
OUTDOORS EVERYWHERE.  
THE NEW INSPIRING  
AND SUSTAINABLE VENUE  
IN BARCELONA. Come visit us!**

For studios and location enquiries:  
[studios@industrialakroll.com](mailto:studios@industrialakroll.com)

For events and venues enquiries:  
[events@industrialakroll.com](mailto:events@industrialakroll.com)

Or call us:  
[+34 938 091 593](tel:+34938091593)



**Recycle buildings to honor  
the past, to preserve a  
neighbourhood's identity, for  
ecology.**



[www.industrialakroll.com](http://www.industrialakroll.com)