



7Pines

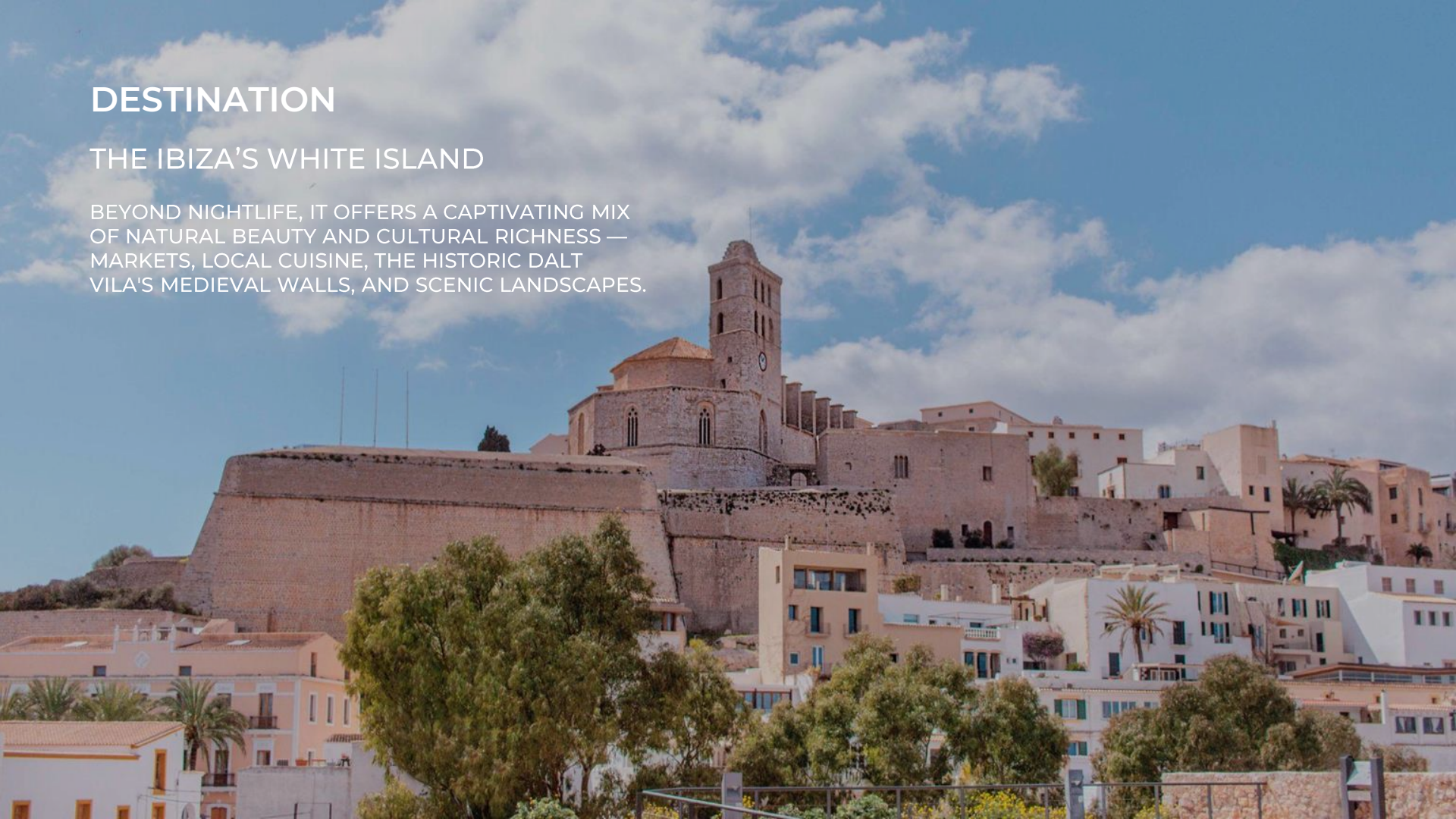
RESORT IBIZA

REMARKABLE MOMENTS
ON THE IBIZA'S WEST COAST

DESTINATION

THE IBIZA'S WHITE ISLAND

BEYOND NIGHTLIFE, IT OFFERS A CAPTIVATING MIX OF NATURAL BEAUTY AND CULTURAL RICHNESS — MARKETS, LOCAL CUISINE, THE HISTORIC DALT VILA'S MEDIEVAL WALLS, AND SCENIC LANDSCAPES.



LOCATION

WHERE LUXURY MEETS ADVENTURE

Nestled on Ibiza's west coast, between Cala Conta and Cala Codolar, 7Pines Resort epitomizes the Mediterranean lifestyle since its 2018 inception. With Es Vedrà as a backdrop and the azure Mediterranean Sea, our resort captures the essence of Ibiza's allure, providing exclusive privacy and beautiful surroundings.

Ibiza Airport	22 km	25 min
Ibiza Town	25 km	35 min
Playa d'en Bossa	23 km	30 min
Golf (Club de Ibiza)	34 km	40 min
Beach (Cala Codolar) walking		5 min





THE HOTEL
THE ULTIMATE LAIDBACK LUXURY

THE HOTEL

OVERVIEW

ACCOMMODATION

185 Suites and 2 Grand Villas.

DINING

3 restaurants and 4 bars.

FEATURES

Three outdoor pools, a 1,500 square meter spa, fitness center, sauna, and relaxation areas.

ACTIVITIES

Tours of Ibiza city and Dalt Vila old town; boat excursions to Formentera; as well as pool parties and BBQs can also be arranged.

EVENT ROOMS

Versatile 9 indoor and outdoor meetings rooms and events areas.

LOCATION

25 minutes from Ibiza International airport and 30 minutes from Ibiza town.

FACILITIES

A dedicated Les Clefs d'Or concierge and specialist event team.

- 1 Lobby/Reception
- 2 Conference/Banquet
- 3 Pershing Yacht Terrace
- 4 Upper Cliff Terrace
- 5 Cliff Terrace
- 6 Infinity Pool Bar
- 7 Pure Seven Spa
- 8 Cone Club
- 9 The View
- 10 Sunset Terrace
- 11 Laguna Pool Bar & tex mex
- 12 Kio house of Kids
- 13 Grand Villas

P Parking

ENTRANCE/EXIT

IBICENCO VILLAGE

CLIFF SUITES

Villa Aurora

Villa Alba

THE LAGUNA



Es Vedrà

Es Vedranell



ACCOMODATION

AN OASIS OF TIMELESS TRANQUILITY

Guests step into a world of luxurious comfort at 7Pines Resort Ibiza, an all-suite resort designed in a village format with casitas. Choose from our exclusive selection, including two four-bedroom Grand Villas and a range of 185 suites.

Number of suites: 185

Number of connecting rooms: 6

Number of twin-bed options: 66

Number of two-bedroom: 15

Number of villas: 2



SPARKLING MOMENTS BY THE SEA



MEETINGS & EVENTS

7PINES RESORT IBIZA SETS THE STAGE

For your exceptional event, nestled in a serene pine grove on the cliffs of Ibiza's west coast since 2018. Whether it's a corporate gathering, a milestone celebration, or any significant event, our luxurious resort a diverse array of backdrops for every occasion.

Versatile indoor spaces

1st Floor Event Centre includes 4 meeting rooms, comprising:

- 1 plenary convertible into 2 smaller meeting rooms
- 2 boardrooms
- 1 foyer

Spectacular outdoor venues

- Cone Club
- Pershing Yacht Terrace
- Cliff & Upper Cliff Terrace



1ST FLOOR EVENT CENTRE

MEETINGS & EVENTS VENUES



FORMENTERA



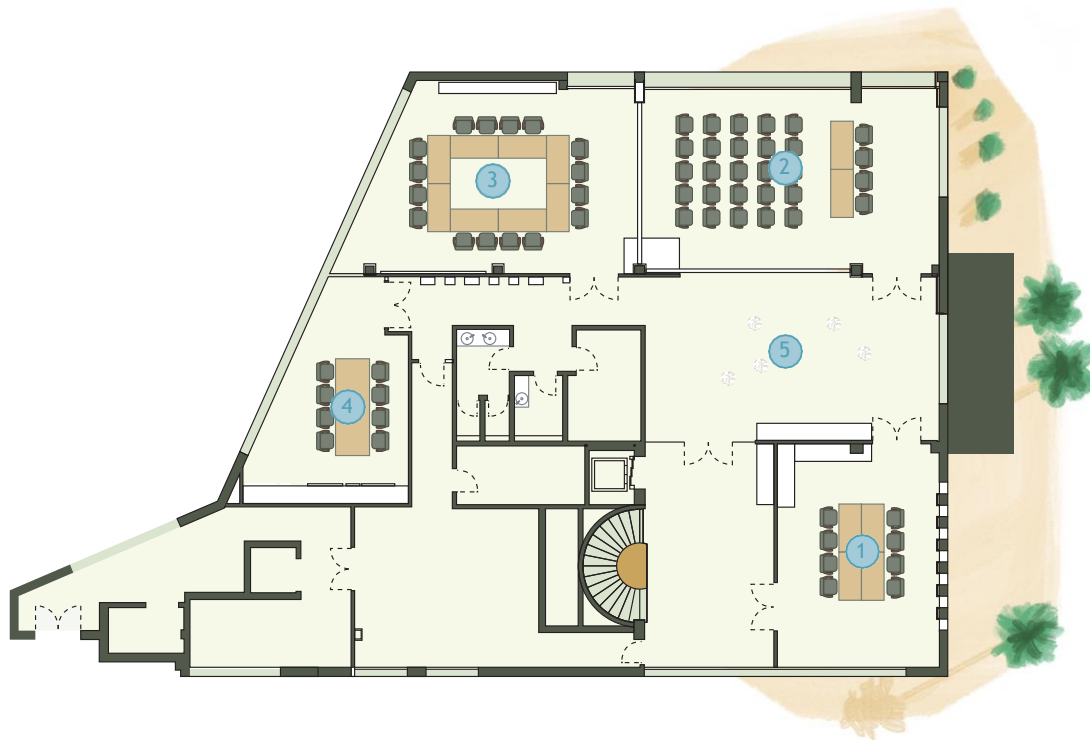
ES VEDRÀ
**Convertible in Es Vedrà I & II*



ES VEDRANELL

1ST FLOOR EVENT CENTRE

- ① Formentera - 42 m²
- ② Es Vedrà I - 66 m²
- ③ Es Vedrà II - 55 m²
- ④ Es Vedranell - 35 m²
- ⑤ Foyer - 55 m²



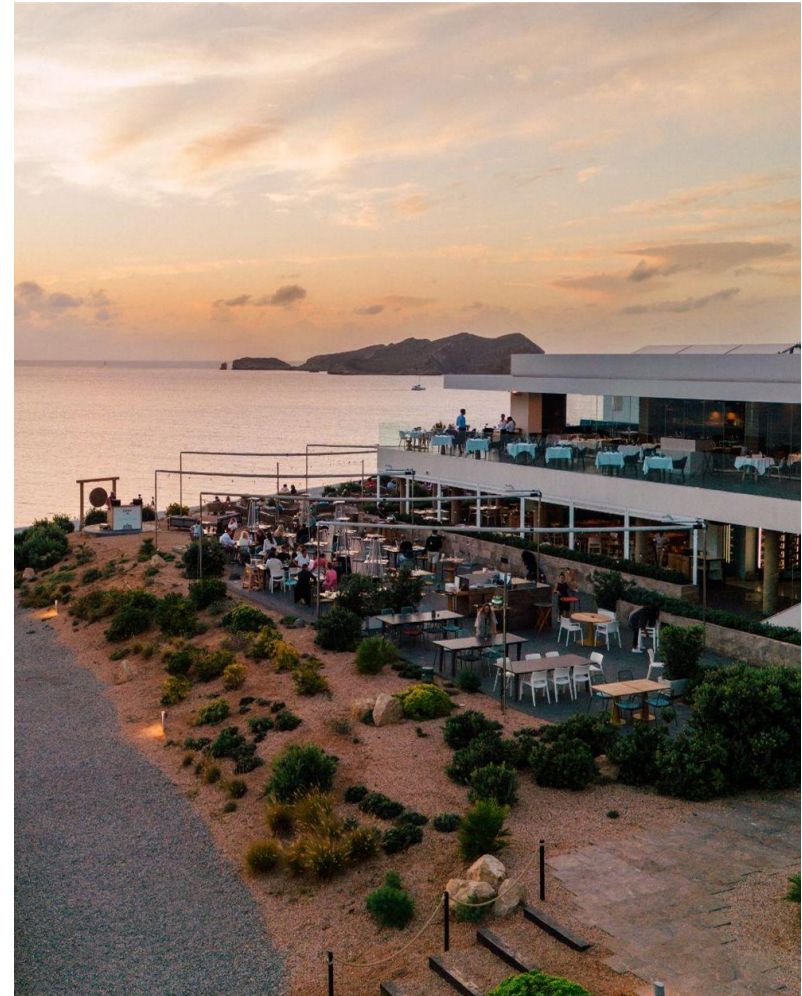
RESORT EVENT AREAS

CONE CLUB RESTAURANT

Perched atop a cliff overlooking the mesmerizing sea and the magnetic Es Vedrà, Cone Club restaurant has evolved into a place of enchantment that evokes Ibiza's spirit and authentic vibes, creating an atmosphere vibrant and sophisticated.

Features:

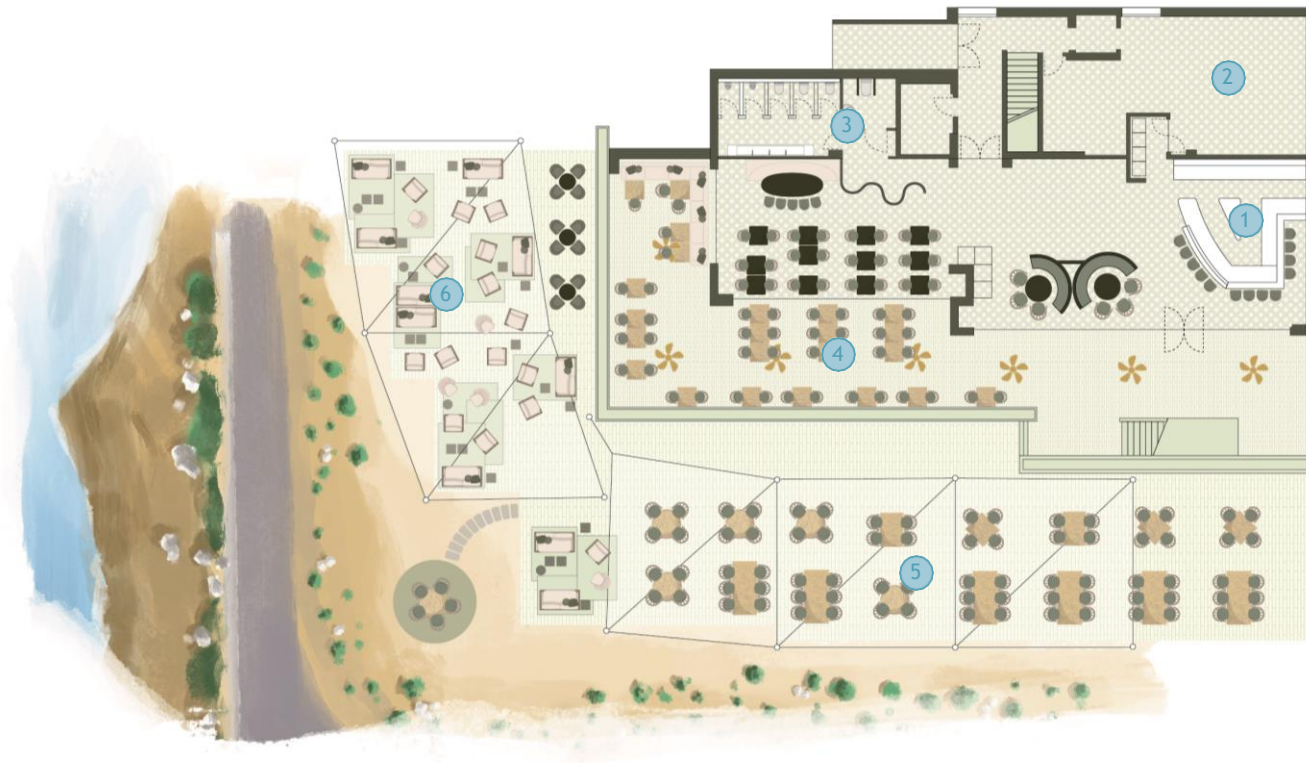
- Relaxed yet magical atmosphere
- Ideal for a cocktail and dinner
- 270 degree views to the sea
- Prime location for sunset
- Maximum capacity: 120 guests
- From April to October, the minimum F&B spend is EUR 40,000. The booking requires 40 suites for a minimum of 2 nights.



CONE CLUB RESTAURANT

FLOOR PLAN

- ① Indoor
- ② Kitchen
- ③ W.C
- ④ Porche
- ⑤ Terrace
- ⑥ Sunset terrace



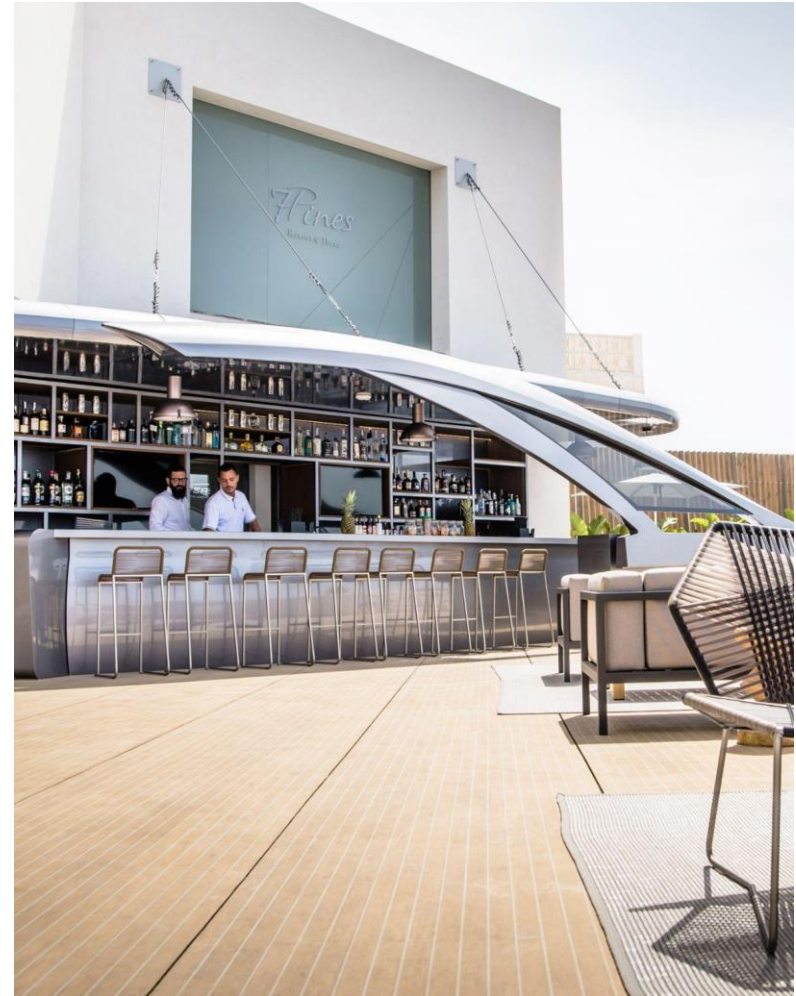
RESORT EVENT AREAS

PERSHING YACHT TERRACE

This unique place is characterized by its sporty, elegant, and sophisticated Italian style, resulting from the exclusive partnership between 7Pines and Pershing Yachts. It seamlessly merges with its modern Asian cuisine and carefully crafted signature cocktail menus influenced by the art of travel.

Features:

- **Stylish lounge with panoramic views**
- **Exclusive venue ideal for a welcome cocktail for up to 70 guests**
- **Group exclusivity possible upon venue rental**
- **From April to October, the minimum F&B spend is EUR 15,000 EUR.**



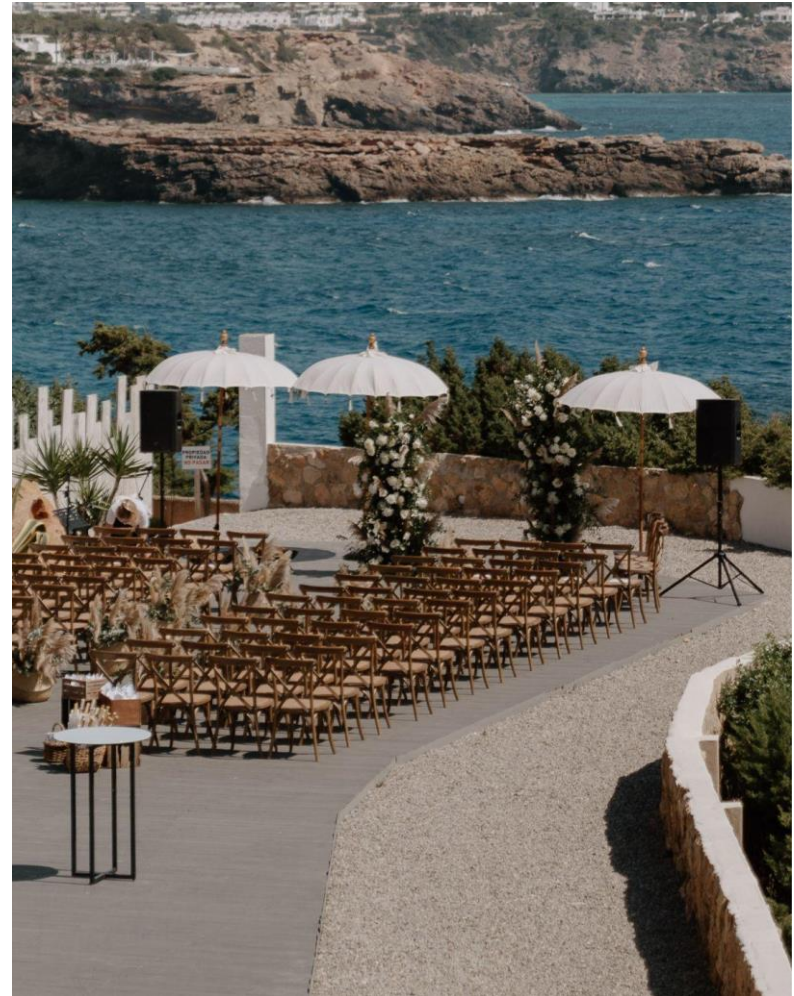
RESORT EVENT AREAS

CLIFF AND UPPER CLIFF TERRACE

Perched on the edge of dramatic cliffs overlooking the breathtaking Mediterranean Sea and the iconic Es Vedrá, this prime event location offers guests an unrivaled backdrop for unforgettable gatherings and stylish dinners under the stars.

Features:

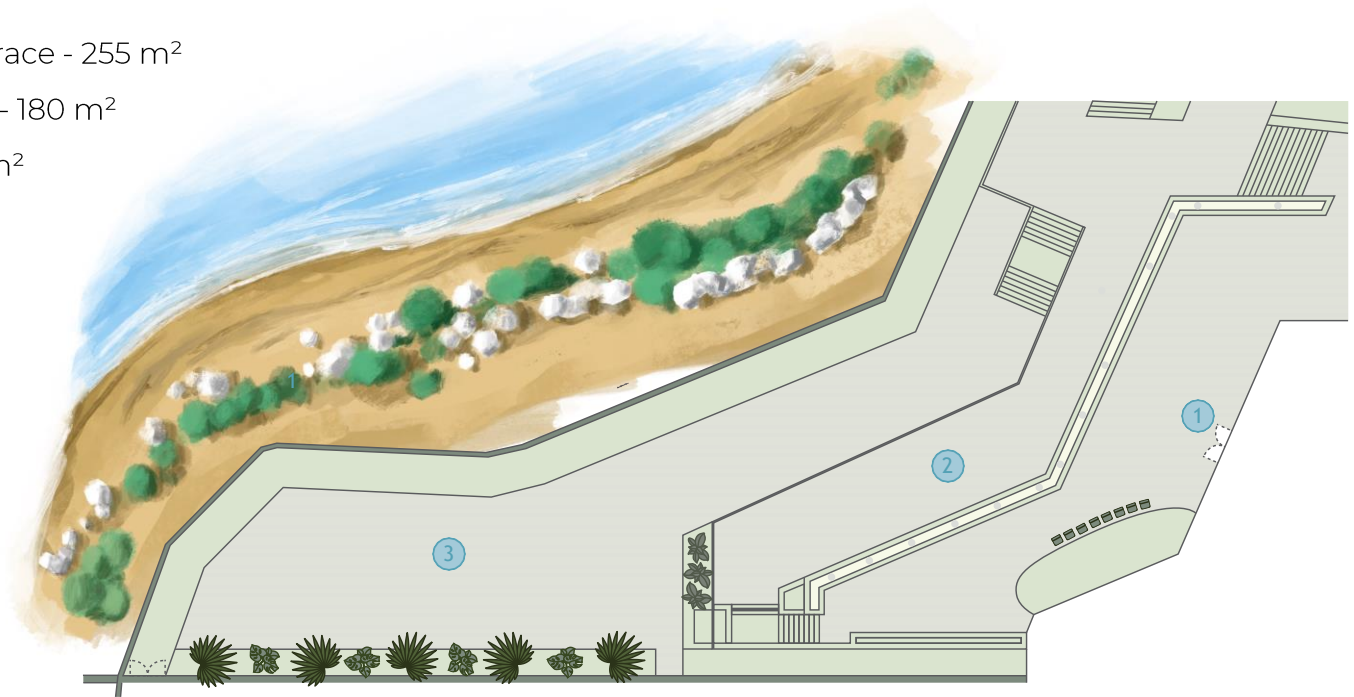
- **Laid-back atmosphere**
- **Ideal for a group gathering or dinner**
- **Unobstructed views to the sea**
- **Prime location for sunset**
- **Maximum capacity: 100 guests**
- **From April to October, the minimum F&B spend is EUR 25,000. The booking requires 20 suites for a minimum of 2 nights.**



PERSHING YACHT & CLIFF TERRACES

FLOOR PLAN

- ① Pershing Yacht Terrace - 255 m²
- ② Upper Cliff Terrace - 180 m²
- ③ Cliff Terrace - 300 m²



RESORT EVENT AREAS

ROOM DIMENSIONS & CAPACITIES



Event Areas	m ²	ft ²	Dimensions	Theater	Classrooms	Boardrooms	U-shape	Banquet Tables of 10	Banquet with Buffet	Cabaret Tables of 6	Reception	Reception with Buffet	Long Table	Lounge
Cliff Terrace	300	3,229	10.0m x 3.0m 17.0m x 4.2m 7.0m x 4.2m	120	-	-	-	100	80	-	160	140	60	80
Upper Cliff Terrace	180	1,937	13.8m x 4.5m 3.4m x 17.4m 6.5m x 18.25m	120	-	-	-	50	40	-	100	40	50	80
Pershing Yacht Terrace	255	2,744	8.1m x 19.5m 6.3m x 5.2m 6.3m x 11.4m	-	-	-	-	-	-	-	70	50	-	65
The View	-	-	-	Restaurant set-up: Total capacity: 140 pax / Indoor: 60 pax (incl. Chef's Table: 12 pax) / Terrace: 80 pax										
Indoor	-	-	-	-	-	-	-	-	-	-	70	50	50	-
Terrace	-	-	-	-	-	-	-	-	-	-	100	80	80	-
Cone Club	805	8,664	-	Restaurant set-up: Total capacity: 174 pax / Indoor: 52 pax / Porche: 38 / Sunset Terrace: 24 / Terrace: 60										
Indoor	112	1,205	10.1m x 5.1m x 2.6m 9.2m x 6.6m x 2.6m	-	-	-	-	-	-	-	60	40	40	-
Porche	180	1,937	4.3m x 10.7m x 2.6m 4.5m x 10.5m x 2.6m 15.5m x 5.5m x 2.6m	-	-	-	-	-	-	-	70	40	40	-
Sunset Terrace	215	2314	14.9 x 14.4m 19.2 x 10.5m 12m x 7.8m	70	-	-	-	-	-	-	60	40	40	24
Terrace	295	3,175	19.2m x 10.5m 12m x 7.8m	-	-	-	-	-	-	-	140	90	90	-

AUTOMOTIVE EVENTS

- Parking: Accommodates 75 cars
- Car Display Opportunities
- Car Wash Facilities & Service Yard
- EV Charging Points: 6 stations





**PRODUCT
& BRAND
LAUNCHES**

INCENTIVES TRIPS & CORPORATE MEETINGS





**CELEBRATIONS
IN STYLE**



MARVEL IN CURATED EXPERIENCES



CAPTIVATING EXPERIENCES

CULINARY JOURNEY



SUNSET RITUAL
AT CONE CLUB



AWARDED TASTING MENU
AT THE VIEW



MIXOLOGIST MASTERCLASS
AT PERSHING YACHT TERRA

CAPTIVATING EXPERIENCES

ADVENTURE BY THE SEA & LAND



SAIL TO FORMENTERA
CHARTER EXPERIENCE



IBIZA ON VESPA
PHOTOGRAPHIC TOUR



BUGGY EXCURSION
SAFARY AROUND THE ISLA

CAPTIVATING EXPERIENCES

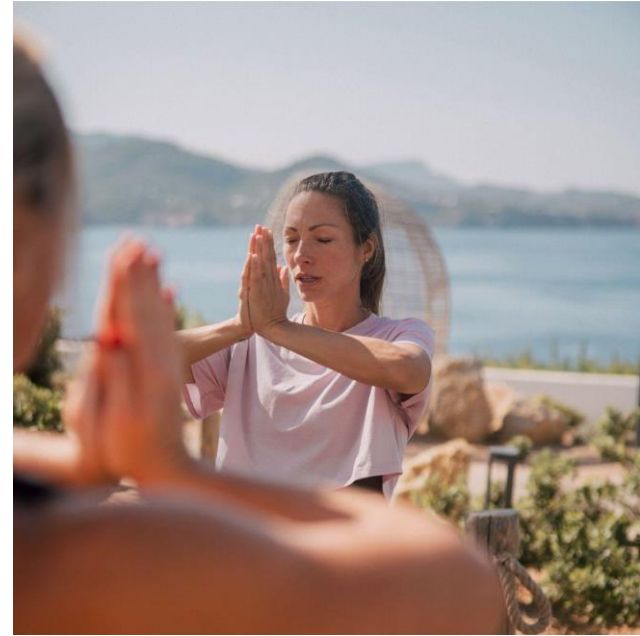
CONNECTED WITH NATURE



HIERBAS IBICENCAS
WORKSHOP



PERFUME MAKING
WORKSHOP



SUNRISE YOGA
PRIVATE CLASS

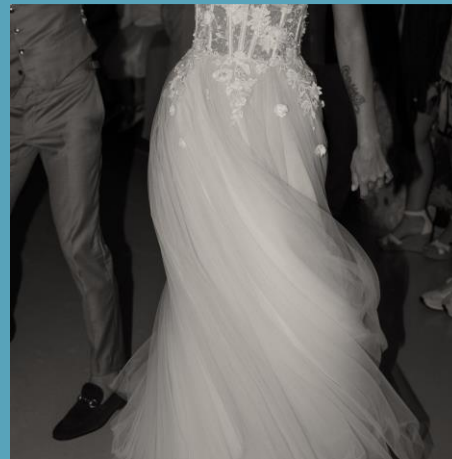
EMBRACE THE EXTRAORDINARY



**AUTOMOTIVE BROCHURE
DOWNLOAD**



**MICE BROCHURE
DOWNLOAD**



**WEDDING BROCHURE
DOWNLOAD**

Laura Alegría
GROUPS & EVENTS MANAGER
groups.ibiza@7pines.com laura.alegria@7pines.com
+34 663 797 696

www.7pines.com